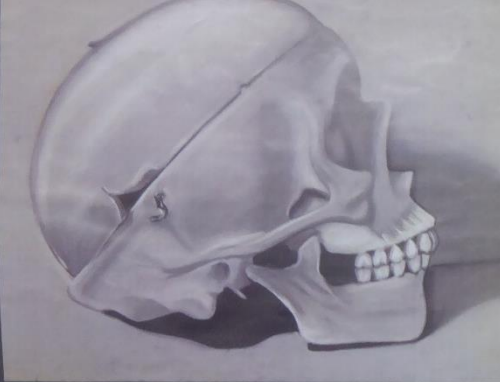


## Zoomorphism

Here, I have drawn with ball point pens inspired by the artist Andrew J. Smith. She uses simple materials and her style requires patience and persistence. I enjoyed doing the cross-hatching, fine textures and details since it made me think more about the shading and highlights. Especially since I did some shading of the lion's face.



## Zoomorphism



## -SKULLS-

Skulls are attached to the human skull. It is represented of death. Lions and snakes kill prey and are very dangerous. I also wanted to study the skulls for my zoomorphism.



## -Birds-



AO1 – An exceptional ability to effectively develop ideas through creative and purposeful investigations demonstrating critical understanding

Achieving a Grade 9

Skilful use of a range of media

Analysing and exploring artist's techniques

AO3 – An exceptional ability to skilfully and rigorously record ideas and observations...as work progresses



Lions are fierce, brave animals and for one of my plans for a final piece I wanted to sketch different angles and faces of lions.

Lots of detailed drawings as well as quick sketches



The Portraits have particularly stood out. A beautifully imaginative hybrid of humans and animals, "this series of paintings, photographs, trying to respond to a form of duality—that assumes an animal part"—by the artist's statement. "To ultimately create an osmosis between the two mediums, so between the animal and the portrait."



Jenn Mann's work are made from oil paints, she takes pictures and changes the hues and saturation, and merges them with animals. She uses colour as a storytelling technique for emotional plotlines. She says the story behind her work are to do with ideas of herself and questions regarding our identity and the people who surround us, from a cynical and sarcastic point of view. Her style is very unique as it combines both humans and animals, partially from the eye. For me, the mood seems quite melancholy or sorrowful in a way, as I see there to not be much joy or hope displayed in either the human or animals expressions and eyes.

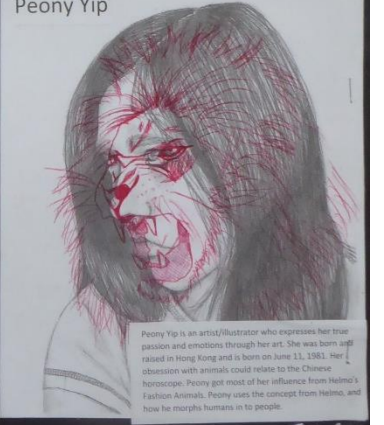


Peony Yip's artwork is particularly allowing Yip draw a human face in graphite and then draw an animal face over the top in red coloured pencil. She draws the animal and human in same sort of position which makes the work better. This made me think about feeling as animals as the humans look like they could be made into some appear to be peaceful as others to look with a further passionate expression. In my piece, I had an unimpressed, sad, and disappointed photograph and a rearing lion. The top to putting has some people change to not reveal their anger and power to hide it.

artist Jenn Mann inspired my piece. In her work, she uses a raster calm and light range of colour alongside bright colour, her style includes the animal protruding out from the human's face. I aim to further develop upon my techniques with more detail and I would do this by painting other scenarios, such as backgrounds and cell life.



Peony Yip



Peony Yip is an artist/illustrator who expresses her true passion and emotions through her art. She was born and raised in Hong Kong and is born on June 13, 1983. Her obsession with animals could relate to the Chinese horoscope. Peony got most of her influence from Helmut's Fashion Animals. Peony uses the concept from Helmut, and how he morphs humans into people.

# YEAR 11 KNOWLEDGE ORGANISER 1

Zoomorphism



In school, I experimented with different of medias: food colouring, coffee, ink and shoe polish. I painted cubits lines and a tiger. I started with a sketch and added further detail shading and texture the materials. They are quite free ideas to help capture the expressions of the animals.

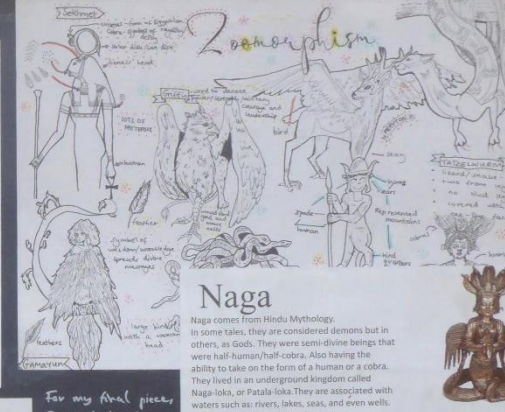


Experimentation and refinement of ideas

Zoomorphism

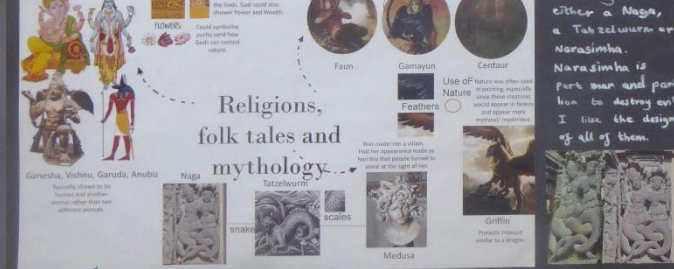
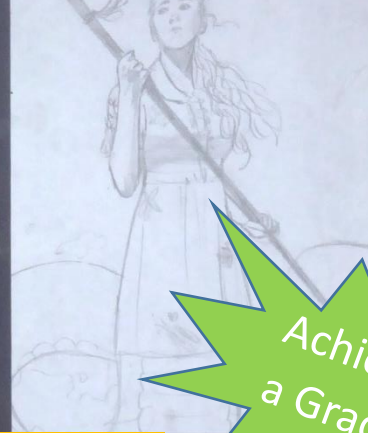
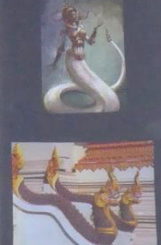


Thorough research



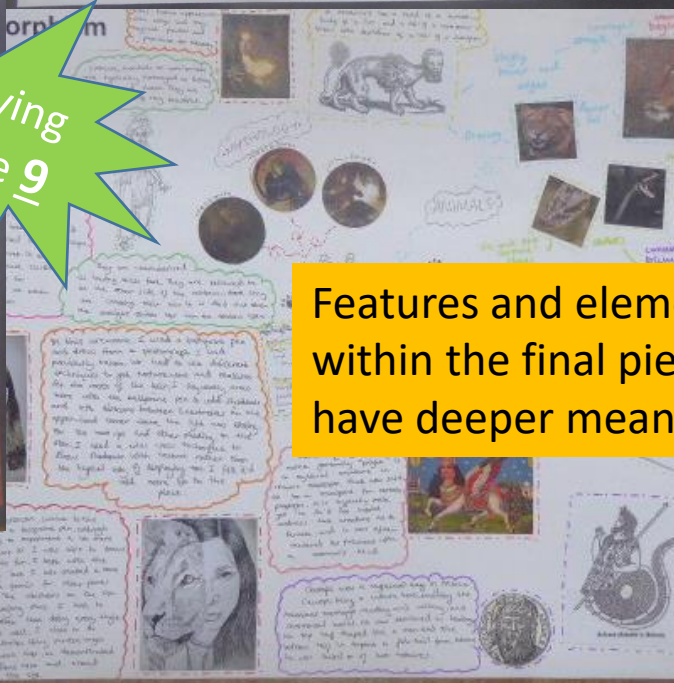
A04 – An exceptional ability to competently present a personal and meaningful response... demonstrating understanding of visual language

Zoomorphism

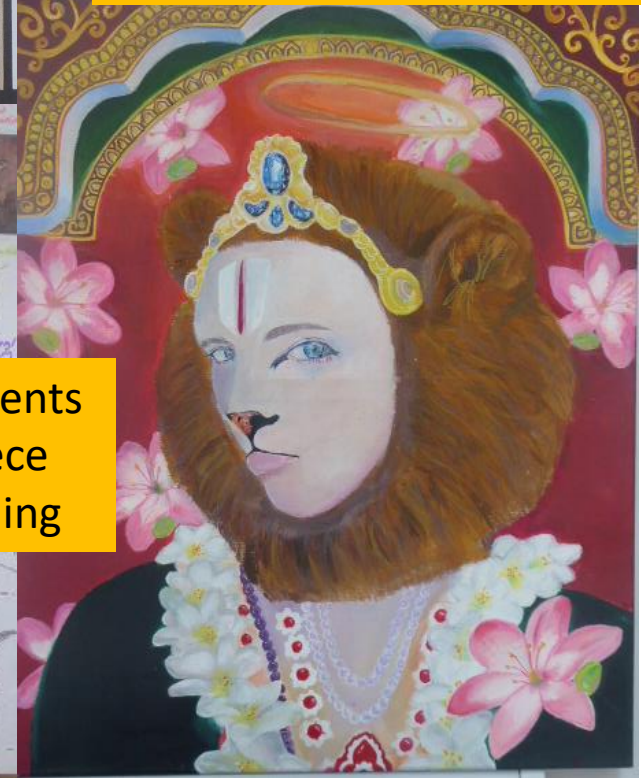


Personal response linking artist research and earlier photos/drawings

Lots of sketches/composition ideas



Features and elements within the final piece have deeper meaning



A02 – An exceptional ability to thoughtfully refine ideas...and purposefully experiment with appropriate media

# YEAR 11 KNOWLEDGE ORGANISER 1